

A care partner's guide to schizophrenia and **COBENFY**

**COBENFY**<sup>®</sup>  
(xanomeline and trospium chloride) capsules  
50mg/20mg, 100mg/20mg, 125mg/30mg

**BE**  
their biggest supporter

**Chanel**

Taking COBENFY

**Fines**

Chanel's mother  
and care partner

Chanel and Fines were compensated for their time.

### **WHAT IS COBENFY (co-BEN-fee)?**

COBENFY is an oral prescription medicine used to treat schizophrenia in adults.

It is not known if COBENFY is safe and effective in children.

### **SELECT IMPORTANT SAFETY INFORMATION**

**Do not take COBENFY if you** have urinary retention problems that cause your bladder to not empty completely or not empty at all; have moderate or severe liver problems (impairment); have gastric retention problems that cause your stomach to empty slowly; are allergic to COBENFY, xanomeline, or trospium chloride, or any of the ingredients in COBENFY; or have an eye problem called untreated narrow-angle glaucoma.

**Please see Important Safety Information throughout and Full Prescribing Information, including Patient Information.**

# BE part of their journey

Hi, I'm Fines, and I care for my daughter Chanel, who takes COBENFY for her schizophrenia.

Being her care partner has taught me patience, expanded my empathy, and even shaped how I care for others as a nurse practitioner.

I've learned firsthand that schizophrenia affects the whole family, and watching someone you love struggle can be overwhelming. I hope this brochure helps you feel supported and empowered when helping your loved one through their journey.



Learn more about Fines' story on page 26.

## SELECT IMPORTANT SAFETY INFORMATION

Before taking COBENFY, tell your healthcare provider about all of your medical conditions, including if you:

- have an enlarged prostate, problems passing urine, or a blockage in your urinary bladder
- have liver problems
- have or have had gallstones or problems with your bile ducts or pancreas
- have stomach or intestinal problems, including constipation, ulcerative colitis, slow emptying of your stomach, or myasthenia gravis
- have an eye condition called narrow-angle glaucoma
- have kidney problems

**COBENFY™**  
(xanomeline and trospium chloride) capsules  
50mg/20mg, 100mg/20mg, 125mg/30mg

## Table of contents

### WHY COBENFY?

Results with COBENFY .....	4
How COBENFY is thought to work .....	8

### TAKING COBENFY

Possible side effects .....	10
How to take COBENFY .....	14

### COBENFY Cares™ SUPPORT PROGRAM 18

### FREQUENTLY ASKED QUESTIONS 20

### ABOUT SCHIZOPHRENIA 22

### SUPPORTING YOUR LOVED ONE & YOURSELF

BE there for them .....	26
Advocacy organizations .....	30
Getting help in a crisis .....	32

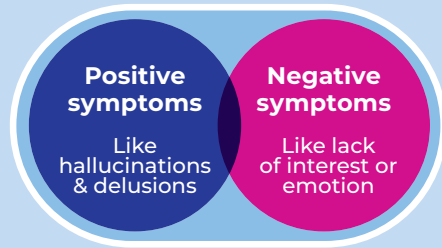
Please see Important Safety Information throughout and Full Prescribing Information, including Patient Information.

# COBENFY significantly improved schizophrenia symptoms

**COBENFY™**  
(xanomeline and trospium chloride) capsules  
50mg/20mg, 100mg/20mg, 125mg/30mg

In 2 clinical studies,\* COBENFY showed...

- ✓ Proven **significant symptom relief** vs placebo (sugar pill)
- ✓ Overall improvement across a range of symptoms\*



COBENFY was studied in two 5-week clinical studies with 470 adults aged 18 to 65 diagnosed with schizophrenia. Participants either took COBENFY or a sugar pill.

\*A schizophrenia rating scale was used to compare meaningful changes in symptoms overall. These symptoms included positive, negative, and general psychopathology symptoms.

## SELECT IMPORTANT SAFETY INFORMATION

**Before taking COBENFY, tell your healthcare provider about all of your medical conditions, including if you (cont'd):**

- are pregnant or plan to become pregnant. It is not known if COBENFY may harm your unborn baby. Tell your healthcare provider if you become pregnant or think you are pregnant during treatment with COBENFY.

In 1 clinical study,† COBENFY...

- ✓ **Reduced the overall severity of schizophrenia**

†A different schizophrenia rating tool was used to evaluate meaningful overall changes in the severity of schizophrenia.



Sagan is taking COBENFY and was compensated for his time.

Individual results may vary.

## SELECT IMPORTANT SAFETY INFORMATION

**Before taking COBENFY, tell your healthcare provider about all of your medical conditions, including if you (cont'd):**

- There is a pregnancy exposure registry for women who take COBENFY during pregnancy. The purpose of this registry is to collect information about the health of women exposed to COBENFY and their baby. If you become pregnant during treatment with COBENFY, your healthcare provider will register you by calling 1-866-961-2388 or online at <https://womensmentalhealth.org/research/pregnancyregistry/atypicalantipsychotic/>
- are breastfeeding or plan to breastfeed. It is not known if COBENFY passes into your breast milk or if it can harm your baby.

**Please see Important Safety Information throughout and Full Prescribing Information, including Patient Information.**



## Real people, real stories

What people are saying about COBENFY.

“ With my symptoms improving, I’ve been able to spend time on hobbies, such as reading, writing, and drawing anime. I have also started to feel more comfortable doing things I enjoy like getting out of the house and spending time with family and friends.”

—Chanel, taking COBENFY

“ Avary’s positivity through it all knowing that he is pushing for better mental health and a future for both of us is very encouraging for me to want to do the same.”

—Ashleigh, wife and care partner to Avary who is taking COBENFY

“ Schizophrenia affects the entire family, but not only the family—the patient, the family, and the community. Having the right medication and staying connected to the right support network is vital.”

—Patricia Ares-Romero, MD, FASAM, paid consultant for Bristol Myers Squibb

[Click here to share your COBENFY story.](#)

**Avary**

Taking COBENFY

Avary and Ashleigh were compensated for their time.

### SELECT IMPORTANT SAFETY INFORMATION

**Tell your healthcare provider about all the medicines you take,** including prescription and over-the-counter medicines, vitamins, and herbal supplements. Taking COBENFY with certain other medicines may increase your risk of side effects from COBENFY or the other medicine and may affect the way COBENFY or the other medicine works. Know the medicines you take. Keep a list of them to show your healthcare provider and pharmacist when you get a new medicine.

**Please see Important Safety Information throughout and Full Prescribing Information, including Patient Information.**

# COBENFY is not an antipsychotic. It works differently

**COBENFY**<sup>®</sup>  
(xanomeline and trospium chloride) capsules  
50mg/20mg, 100mg/20mg, 125mg/30mg

COBENFY is a different approach to schizophrenia treatment. COBENFY is a unique combination of 2 medicines: **xanomeline** and **trospium chloride**.



**Xanomeline** (Za-NO-muh-leen) is thought to activate muscarinic receptors in the brain to help adjust important chemical messengers related to schizophrenia symptoms.



**Trospium** (TRO-spee-um) **chloride** may help prevent xanomeline from working outside the brain so that other parts of the body are less likely to be impacted.

**The exact way COBENFY works is not fully understood.**

## What are receptors?

**Receptors** are small proteins (or small structures) found on the cells in the brain and body. Certain medicines can interact with receptors to “activate” them. This may change how the cells function.

**Muscarinic acetylcholine receptors** are types of receptors.

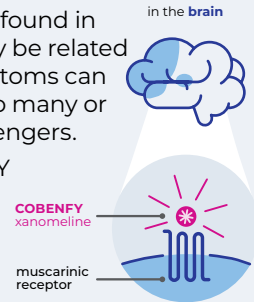


**COBENFY is the first and only FDA-approved schizophrenia medicine that is thought to work by activating specific small proteins in the brain called muscarinic acetylcholine receptors.**

## The xanomeline in COBENFY activates specific muscarinic receptors in the brain

These receptors are thought to be found in specific areas of the brain that may be related to schizophrenia symptoms. Symptoms can happen when these areas have too many or too few important chemical messengers.

When the xanomeline in COBENFY activates receptors in the brain, it may help adjust the levels of important chemical messengers involved in schizophrenia.



[Click here to watch a video on how COBENFY works.](#)

## SELECT IMPORTANT SAFETY INFORMATION What should I avoid while taking COBENFY?

**Do not** drive, operate heavy machinery, or do other dangerous activities until you know how COBENFY affects you. COBENFY may cause dizziness, confusion, seeing or hearing things that are not real (hallucinations), and sleepiness.

**Please see Important Safety Information throughout and Full Prescribing Information, including Patient Information.**

# Possible side effects of COBENFY

Most common side effects experienced by 5% or more of people taking COBENFY

Adverse reaction	COBENFY (n=251)	Sugar pill (n=253)
Nausea	19%	4%
Stomach upset or burning (dyspepsia)	18%	5%
Constipation	17%	7%
Vomiting	15%	1%
High blood pressure	11%	2%
Stomach (abdominal) pain	8%	4%
Diarrhea	6%	2%
Increased heart rate	5%	2%
Dizziness	5%	2%
Heartburn (gastrointestinal reflux disease)	5%	<1%

People taking COBENFY had similar rates of uncontrolled facial or body movements (2%) as those taking a sugar pill (<1%).



Eating food too close to taking COBENFY can make side effects worse.



Albert is taking COBENFY and was compensated for his time.

### SELECT IMPORTANT SAFETY INFORMATION

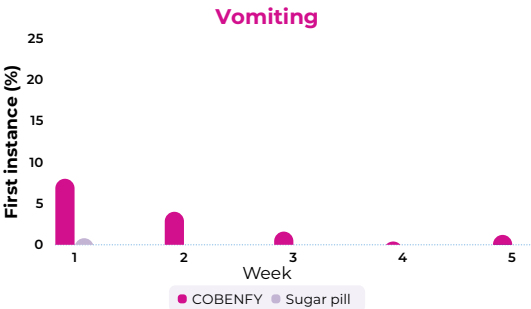
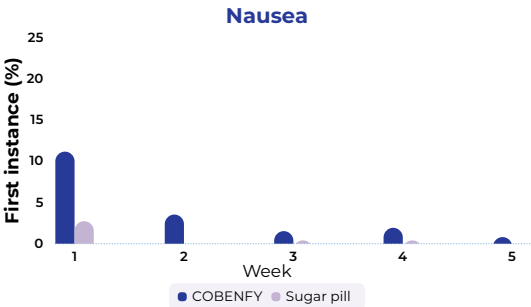
**COBENFY may cause serious side effects, including:** Problems with emptying your bladder (urinary retention), risks in people with liver problems, risks in people with bile duct and gallbladder problems (biliary disease), slow emptying of your stomach (decreased gastrointestinal motility), serious allergic reactions (angioedema), an eye problem called narrow-angle glaucoma, increases in heart rate, side effects in people with kidney problems, and central nervous system problems.

**Please see Important Safety Information throughout and Full Prescribing Information, including Patient Information.**



# Possible side effects of COBENFY (cont'd)

First instance of nausea and vomiting often occurred during the first 2 weeks of treatment and **generally decreased over time.**



If your loved one experiences nausea or vomiting, **ask their healthcare provider** about options that may help.



## COBENFY effects on weight

**Sugar pill** – Average change in 5-week studies was 4.96 pounds of weight gain **+4.96 lbs**

**COBENFY** – Average change in 5-week studies was 3.04 pounds of weight gain **+3.04 lbs**

**COBENFY** – Average change in 1-year studies was 5.64 pounds of weight loss\* **-5.64 lbs**

\*The results are from 1-year studies where participants and their physicians knew they were taking COBENFY, which may have influenced the results.

<sup>†</sup>On average, participants lost 5.6 lbs in year-long trials. 17.6% of participants had a decrease in body weight of ≥7%. 4.1% of participants had an increase in body weight of ≥7%.



Please see Important Safety Information throughout and **Full Prescribing Information, including Patient Information.**

# Start and end the day with COBENFY

**COBENFY**<sup>®</sup>  
(xanomeline and trospium chloride) capsules  
50mg/20mg, 100mg/20mg, 125mg/30mg

COBENFY is taken twice a day on an empty stomach



## COBENFY is taken twice daily

- Take COBENFY exactly as prescribed. Taking COBENFY twice a day may help keep the medicine at a consistent level in the body throughout the day
- Your loved one can take **1 pill when they wake up and 1 pill before bed.** Talk to their healthcare provider about the best time to take COBENFY



## Take COBENFY on empty

- Take COBENFY on an empty stomach. Eating food too close to taking COBENFY can make side effects worse
- Take COBENFY **at least 1 hour before or at least 2 hours after a meal**

### Ways to help your loved one stay on track:

- Set reminders on their phone to take COBENFY
- Place their medication in a visible area, like a nightstand
- Sign up for the COBENFY Cares™ support program for tips that may help your loved one take their medication on time. Learn more on page 18

## SELECT IMPORTANT SAFETY INFORMATION

COBENFY may cause serious side effects, including:

- **Problems with emptying your bladder (urinary retention).** See **“Do not take COBENFY if you:”** COBENFY may cause your bladder to not empty completely or not empty at all. You are at increased risk for urinary retention if you are elderly, have a blockage in your bladder, have an enlarged prostate called benign prostatic hyperplasia (BPH), have bladder emptying problems from diabetes, or are taking higher doses of COBENFY.

**Please see Important Safety Information throughout and Full Prescribing Information, including Patient Information.**



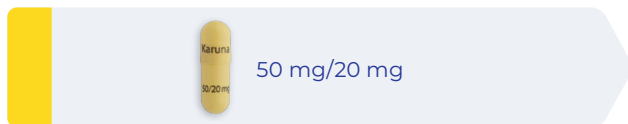
# COBENFY comes in different strengths

**COBENFY™**  
(xanomeline and trospium chloride) capsules  
50mg/20mg, 100mg/20mg, 125mg/30mg



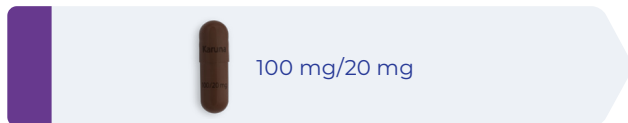
COBENFY is made of xanomeline and trospium chloride. A healthcare provider will determine which dose is right for your loved one and may change their dose over time.

## 1. Starting dose for at least 2 days



When starting COBENFY, the recommended dose is 50 mg/20 mg twice daily for at least 2 days.

## 2. Increased dose for at least 5 days



Then their healthcare provider may increase their dose to 100 mg/20 mg twice daily for at least 5 days.

## 3. Ongoing dose



Their healthcare provider will determine the correct dose.

Pills not shown at actual size.

mg/mg is shown as xanomeline/trospium chloride.

**Do not let your loved one change the dose, stop taking COBENFY without talking to their healthcare provider, or open the capsules.**

If they take too much COBENFY, call their healthcare provider or the Poison Help Line at 1-800-222-1222 or go to the nearest hospital emergency room right away.

## SELECT IMPORTANT SAFETY INFORMATION

**COBENFY may cause serious side effects, including (cont'd):**

- **Problems with emptying your bladder (urinary retention) (cont'd).** Urinary retention may increase your risk for getting a urinary tract infection. Call your healthcare provider or get emergency help right away if you get any signs or symptoms of urinary retention during treatment with COBENFY, including:
  - difficulty urinating
  - full bladder and difficulty emptying your bladder
  - urination in a weak stream or drips
  - pain when you urinate
  - urinating frequently

**Please see Important Safety Information throughout and Full Prescribing Information, including Patient Information.**

Access free, 1:1 support 24/7 with a  
COBENFY prescription

Our team of COBENFY Cares Champions\* is available 365 days a year and may be able to help your loved one:



Answer questions about COBENFY



Get ongoing support with regularly scheduled check-ins



Build routines for taking medication as prescribed

\*COBENFY Cares Champions are available to provide support to patients who have been prescribed COBENFY. Champions do not provide medical advice or care. COBENFY Cares Champions are provided as a service by Bristol Myers Squibb. Patients should discuss any questions about their medical conditions and treatment options with their healthcare providers.

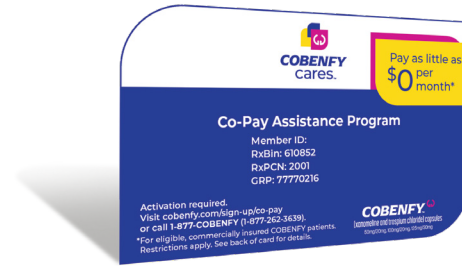


Does your loved one want tips for remembering to take their medicine regularly? COBENFY Cares has tools available.

Our Champions can help your loved one understand insurance coverage and sign up for a COBENFY Co-Pay Card†

Eligible participants may pay as little as \$0

If your loved one has private or commercial health insurance, they may be eligible to pay as little as \$0 per month through a co-pay savings offer. Certain terms and conditions apply.



†COBENFY Cares does not guarantee insurance coverage for COBENFY. Coverage is determined by your loved one's insurance provider. Please see COBENFY Terms and Conditions in pocket.

Click [here](#) or call 1-877-COBENFY (1-877-262-3639) to enroll in ongoing support and check co-pay eligibility.

Please see Important Safety Information throughout and Full Prescribing Information, including Patient Information.

## Frequently asked questions

### **Q: Is COBENFY an antipsychotic?**

**A:** No, COBENFY is not an antipsychotic. COBENFY is the first and only FDA-approved schizophrenia medicine that is thought to work by activating specific small proteins in the brain called muscarinic acetylcholine receptors. The exact way COBENFY works is not fully understood.

### **Q: Should COBENFY be taken with food?**

**A:** COBENFY should be taken by mouth on an empty stomach—at least 1 hour before a meal or at least 2 hours after a meal. Eating food too close to taking COBENFY can make side effects worse.

### **Q: If my loved one experiences nausea and/or vomiting, should they stop taking COBENFY?**

**A:** If your loved one experiences nausea and/or vomiting, they should talk to their healthcare provider before they stop taking COBENFY. Learn more about potential side effects on pages 10-13.

### **Q: How can I learn more about cost and savings options?**

**A:** There may be different cost-saving options for COBENFY, depending on insurance coverage and financial needs. If your loved one has been prescribed COBENFY, contact COBENFY Cares<sup>™</sup> to better understand the options available to them.

### **Q: How do I use the COBENFY Co-Pay Card?**

**A:** Bring the COBENFY Co-Pay Card to the pharmacy counter at the time the prescription is filled. Eligible participants may pay as little as \$0 per 30-day supply. Please see COBENFY Terms and Conditions in the pocket. For questions about the program, including savings on mail-order prescriptions, please call **1-877-COBENFY** (1-877-262-3639).

Other questions? Check out our FAQs at [COBENFY.com/faqs](https://cobenfy.com/faqs) or [click here](#).

### **SELECT IMPORTANT SAFETY INFORMATION**

**COBENFY may cause serious side effects, including (cont'd):**

- **Risks in people with liver problems.** See “Do not take COBENFY if you:” It is not recommended that people with mild liver problems (impairment) take COBENFY because they have an increased risk of getting side effects from COBENFY.

**Please see Important Safety Information throughout and Full Prescribing Information, including Patient Information.**

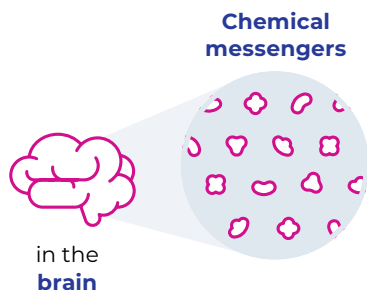
# About schizophrenia

Schizophrenia is a complex condition that may not be well understood by others who interact with your loved one. This introduction to schizophrenia may help you explain to others what your loved one may be experiencing in simpler terms.

## How does the brain work?

The brain is made up of billions of cells that help you think, learn, move, sleep, and more.

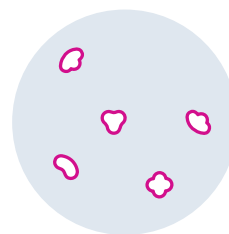
These cells need to work together and communicate with each other. They do this by sending each other **chemical messengers**.



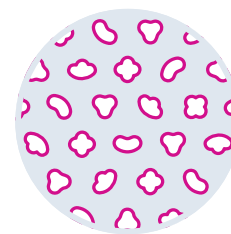
## What's happening in the brain when you have schizophrenia?

Schizophrenia is a serious mental health condition that's connected to what's happening in the brain.

When you have schizophrenia, the amounts of certain kinds of chemical messengers in the brain may be **too high** or **too low**. This may lead to symptoms like hallucinations, feeling unmotivated, and having trouble with memory and learning.



**Too few** chemical messengers



**Too many** chemical messengers

Schizophrenia affects people of all ages, but with treatment, it can be managed.

## SELECT IMPORTANT SAFETY INFORMATION

**COBENFY may cause serious side effects, including (cont'd):**

- **Risks in people with liver problems (cont'd).** Your healthcare provider will check the liver enzyme levels in your blood before starting treatment and as needed during treatment with COBENFY.

**Please see Important Safety Information throughout and Full Prescribing Information, including Patient Information.**



# Understanding their symptoms

## Three types of symptoms

It's important to understand and recognize the different types of symptoms your loved one may be experiencing so that you can discuss them with their healthcare provider.

### Positive symptoms are additional experiences that your brain creates

- Hallucinations – Seeing, hearing, feeling, tasting, or smelling something that is not there
- Delusions – Holding beliefs that are not true or based in reality
- Difficulty thinking or speaking

### Negative symptoms are like missing pieces of your usual self

- Difficulty staying motivated to complete tasks
- Decreased sense of joy or happiness
- Showing little emotion, not smiling or using facial expressions
- Social withdrawal

### Cognitive symptoms affect how you think and process information

- Trouble with memory
- Difficulty understanding and making decisions
- Difficulty paying attention

This is not a complete list of symptoms, and everyone living with schizophrenia experiences symptoms differently.

Log your loved one's symptoms to guide a productive conversation with their healthcare provider. [Click here](#) to print the Symptom Tracker or visit [COBENFY.com/resources](https://cobenfy.com/resources).

## SELECT IMPORTANT SAFETY INFORMATION

### COBENFY may cause serious side effects, including (cont'd):

- **Risks in people with liver problems (cont'd).** Tell your healthcare provider if you get any signs or symptoms of liver problems during treatment with COBENFY, including:
  - yellowing of your skin or the white part of your eyes
  - dark urine
  - pain and swelling in the upper right part of your stomach (abdomen)
  - stomach pain that spreads to your back or to below your right shoulder
  - itching
  - nausea or vomiting
  - loss of appetite
  - fever
  - chills
  - light-colored stools
  - tiredness

**Please see Important Safety Information throughout and Full Prescribing Information, including Patient Information.**

# BE there for them

**COBENFY**<sup>®</sup>  
(xanomeline and trospium chloride) capsules  
50mg/20mg, 100mg/20mg, 125mg/30mg

“Love, consistency, and presence can make all the difference in their treatment journey.” —Fines, a care partner

## SELECT IMPORTANT SAFETY INFORMATION

COBENFY may cause serious side effects, including (cont'd):

- **Risks in people with bile duct and gallbladder problems (biliary disease).** COBENFY may cause a blockage in your bile ducts that could lead to gallstones, pancreatitis, and increases in your liver enzymes. Your healthcare provider will check your liver enzyme and bilirubin levels in your blood before starting treatment and as needed during treatment with COBENFY.

While everyone's schizophrenia journey is different, care partners share the common goal of providing the best possible support to their loved one. No one knows this better than Fines, who has shared some of her experience and insights that you may find helpful.



### Hold on to hope

Fines has found there will be good days and bad days. So, she celebrates the small wins, no matter how minor they may seem.



### Get informed

Educating herself about her daughter's condition allows Fines to come from a place of understanding and empathy as she helps Chanel along her treatment journey.



### Seek out support

Fines understands that it's normal to feel confused, scared, or even frustrated at times. You are not alone. Reach out for help, both for your loved one and yourself.

[Click here](#) to hear real stories from people taking COBENFY and others living with schizophrenia.

Please see Important Safety Information throughout and [Full Prescribing Information](#), including [Patient Information](#).





# BE there for you

**COBENFY™**  
(xanomeline and trospium chloride) capsules  
50mg/20mg, 100mg/20mg, 125mg/30mg

## Ways Fines takes care of herself:

- ✓ Hiking and being out in nature
- ✓ Practicing breathing techniques to stay grounded
- ✓ Spending quality time with family
- ✓ Reading
- ✓ Talking with other care partners

Discover advocacy groups for you  
and your loved one on page 30.

"I think care partners need support, boundaries,  
and rest in order to continue showing up in a  
healthy, sustainable way." —Fines, a care partner

## SELECT IMPORTANT SAFETY INFORMATION

COBENFY may cause serious side effects, including (cont'd):

- **Risks in people with bile duct and gallbladder problems (biliary disease) (cont'd).** Tell your healthcare provider if you get any signs or symptoms of biliary disorders during treatment with COBENFY, including:
  - stomach upset or burning (dyspepsia)
  - vomiting
  - nausea
  - pain in the upper right part of your stomach

Please see Important Safety Information throughout  
and Full Prescribing Information, including Patient  
Information.

## Advocacy groups for you and your loved one

**COBENFY™**  
(xanomeline and trospium chloride) capsules  
50mg/20mg, 100mg/20mg, 125mg/30mg

We understand that you both may need a helping hand sometimes. There are advocacy organizations,\* like Schizophrenia & Psychosis Action Alliance, that offer in-person and online support groups for care partners like you and your loved one. Explore getting connected to help with one of the groups below.



**American Foundation for Suicide Prevention**  
afsp.org



**Caregiver Action Network**  
caregiveraction.org/schizophrenia



**Clubhouse International**  
clubhouse-intl.org



**CURESZ Foundation**  
curesz.org



**Mental Health America**  
mhanational.org



**National Alliance on Mental Illness**  
nami.org



**Schizophrenia & Psychosis Action Alliance**

[sczaction.org/support-group-registration/](https://sczaction.org/support-group-registration/)



**Students With Psychosis**  
sws.ngo

\*Bristol Myers Squibb does not endorse these organizations. The information/links provided by Bristol Myers Squibb are meant for informational purposes only and are not meant to replace a physician's medical advice.

[Click here](#) or explore more resources available at [COBENFY.com/resources](https://COBENFY.com/resources).

### SELECT IMPORTANT SAFETY INFORMATION

**COBENFY may cause serious side effects, including (cont'd):**

- **Slow emptying of your stomach (decreased gastrointestinal motility).** See **“Do not take COBENFY if you:”** You are at increased risk for getting decreased gastrointestinal motility if you have ulcerative colitis, already have problems with slow stomach emptying, and have myasthenia gravis.

**Please see Important Safety Information throughout and Full Prescribing Information, including Patient Information.**



## Getting help in a crisis

Schizophrenia is a serious mental health condition. If you fear you or your loved one is at risk, contact the National Hotline For Mental Health Crises, which is available 24/7.

- 988 Suicide and Crisis Lifeline (also known as 1-800-273-TALK (8255))
- Para Español: 1-888-628-9454
- Options for deaf and hard of hearing: 1-800-799-4889
- Veterans crisis line: Dial 1-800-273-8255, then press 1
- Don't want to talk? Text "HOME" to 741741
- Another option is to call 911



Actor portrayal.

### SELECT IMPORTANT SAFETY INFORMATION

**COBENFY may cause serious side effects, including (cont'd):**

- **Slow emptying of your stomach (decreased gastrointestinal motility) (cont'd).** Tell your healthcare provider if you get any signs and symptoms of decreased gastrointestinal motility during treatment with COBENFY, including:
  - constipation
  - vomiting
  - nausea
  - stomach (abdominal) bloating
  - stomach (abdominal) pain
  - a feeling of fullness after eating just a few bites
  - acid reflux

## Contacts

**COBENFY™**  
(xanomeline and trospium chloride) capsules  
50mg/20mg, 100mg/20mg, 125mg/30mg

Your loved one may require emergency help from time to time, so it's important to be prepared with this information.

### Doctors' names and numbers:

---

---

---

### Therapist/counselors' names and numbers:

---

---

---

### Locations of nearby emergency rooms:

---

---

---

### Names and numbers of other supportive people:

---

---

---

### Additional notes:

---

---

---

**Please see Important Safety Information throughout and Full Prescribing Information, including Patient Information.**

# Important Safety Information (cont'd)

## COBENFY may cause serious side effects, including (cont'd):

- **Serious allergic reactions (angioedema).** Angioedema may happen during treatment with COBENFY and can be life threatening. Stop taking COBENFY and call your healthcare provider or get emergency help right away if you get any of the following signs or symptoms of a serious allergic reaction during treatment with COBENFY, including:
  - hives
  - swelling of your face, lips, mouth, or tongue
  - swelling of your throat
  - hoarseness or difficulty speaking
  - breathing problems
- **An eye problem called narrow-angle glaucoma.** See “Do not take COBENFY if you:” If you already have narrow angles in your eyes, COBENFY may cause a sudden attack (acute angle closure) of glaucoma. Tell your healthcare provider if you get any signs or symptoms of narrow-angle glaucoma during treatment with COBENFY, including:
  - red eyes
  - blurred vision
  - seeing halos or bright colors around lights
  - eye pain or discomfort
  - nausea or vomiting
  - severe headache
- **Increases in heart rate.** COBENFY may increase your heart (pulse) rate. Your healthcare provider should check your heart rate before you start treatment and during treatment as needed. Tell your healthcare provider if you get a racing or pounding feeling in your chest during treatment with COBENFY.

- **Side effects in people with kidney problems.** People with kidney problems may have an increased risk of getting dry mouth, constipation, stomach upset or burning, urinary tract infection, and urinary retention during treatment with COBENFY.
- **Central nervous system problems.** See “What should I avoid while taking COBENFY?”

## The most common side effects of COBENFY include:

- nausea
- stomach upset or burning (dyspepsia)
- constipation
- vomiting
- high blood pressure
- stomach (abdominal) pain
- diarrhea
- increased heart rate
- dizziness
- heartburn (gastrointestinal reflux disease)

Your healthcare provider may lower your dose or stop treatment with COBENFY if you get certain side effects.

These are not all of the possible side effects of COBENFY.

Call your doctor for medical advice about side effects.

You may report side effects to FDA at 1-800-FDA-1088.

**Please see Important Safety Information throughout and Full Prescribing Information, including Patient Information.**

## Reasons to **BE**lieve in COBENFY



The **first and only FDA-approved muscarinic agonist**\* for schizophrenia



Proven **symptom relief across a range of symptoms**, including positive and negative symptoms<sup>†</sup>



It is not an antipsychotic—**it works differently**\*

\*COBENFY is a muscarinic agonist (xanomeline) and muscarinic antagonist (trospium chloride). The exact way COBENFY works is not fully understood.

<sup>†</sup>COBENFY was studied in two 5-week clinical studies with 470 adults aged 18 to 65 diagnosed with schizophrenia. Participants either took COBENFY or a sugar pill. A schizophrenia rating scale was used to compare meaningful changes in symptoms overall. These symptoms included positive, negative, and general psychopathology symptoms. Individual results may vary.

[Click here](#) to find out more  
or visit **COBENFY.com**.

### **SELECT IMPORTANT SAFETY INFORMATION**

The most common side effects of COBENFY include nausea, stomach upset or burning (dyspepsia), constipation, vomiting, high blood pressure, stomach (abdominal) pain, diarrhea, increased heart rate, dizziness, and heartburn (gastrointestinal reflux disease).

**Please see Important Safety Information throughout and Full Prescribing Information, including Patient Information.**



Cobenfy, Cobenfy Cares, and the Cobenfy logo are trademarks of Karuna Therapeutics, Inc., a Bristol Myers Squibb company. All other trademarks are the property of their respective owners.  
© 2025 Bristol-Myers Squibb Company.  
1629-US-2501196 10/25